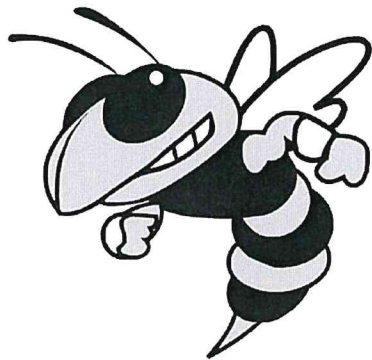


NTI

Non-Traditional Instruction

English & Spanish Days 1-10

****Work will be modified according to each
student's IEP or 504 plan**



NTI Instruction Sheet

All English and Spanish teachers will post NTI assignments on Google Classroom or Duolingo. Teachers will be available for questions through email, Google Classroom, or Remind.

For English or Spanish, follow these instructions:

1. Log into Google Classroom or Duolingo to view and access assignments.
2. Send a message to your instructor letting them know you are able to access the assignment.
3. Complete the assignment.
4. Turn in assignment and let your instructor know when you have finished.

****Contact your instructor with any questions or concerns****